



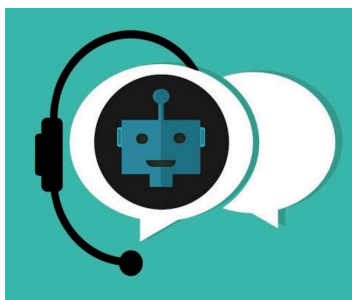
Welcome 2024!



March is the best
time for
PREPARING for
your everlastings



...Decide where to plant, smooth over the ground, and grab a packet of everlastings in anticipation! Best time to plant, in most of Australia, is actually April - August ❤️. Please ask at your local nursery for optimal times for your specific area.



We've gone AI!!
Have your
questions answered
by a personalised
Chatbot!

March is the month where we adopt Lucinda the Chatbot. Have your questions answered immediately, or be directed to me personally to finish the conversation... you will be fully informed!

Grab a packet now!



So excited to send fresh new boxes to our retailers, ready for them to supply for the season ahead ❤️. Click here for a list of our [retailers](#).

Everlasting school or club fundraiser -
Perfect time to organise!!
[CLICK HERE TO BEGIN!](#)

Community Service Projects in Laos

- School Fundraiser -

Help support the communities in Laos when our Penrhos girls fulfil a community service trip in November 2019

Everlastings are...

- Water-wise, bold and beautiful
- Easy to grow with 100% germination rate
- Australian native, they are not an environmental weed
- Long flowering from July to November, depending on season
- Self-seeding which do not require further plantings once established
- Long lasting seed, is viable for at least 10 years



Everlastings can be used for...

- Garden bed features, driveways, pot plants, road verges, cut or dried flowers and as a special gift.

Order Form

Packets of everlastings available in two sizes. A 10g packet of everlasting seed will cover an area of 10m² in your garden! The seed has 100% germination and will last for 10 years after purchase. For growing instructions see www.everlastings.com.au



Name _____

Class _____ Teacher _____

| Packet Size | Cost | Quantity | Total Cost |
|-------------------------|---------|----------|------------|
| 10g everlasting packet | \$10.00 | | |
| 20g everlasting packets | \$20.00 | | |
| Total | | | |

Please enclose money with this form and return to your school by

Term 2, Week 4 (Monday, 20 May 2019)

Remember 50% of the purchase price goes directly to the Community Service Projects in Laos

A: RMB 328 Kojonup 6395 WA P: 08 9833 9517 F: 08 9833 7548 M 0428 337 517 E: info@everlastings.com.au

The timing couldn't be better than right now to organise a fundraiser! The packets can be distributed at the perfect time for people to plant! At least 50% of packet prices go to YOU! 🌸

[Click here for fundraising forms](#)

DOWN ON THE FARM



This is Phillip, he is a lovely backpacker from France, helping Rob with some fencing. Philip is a free diver, able to hold his breath for 5 minutes and 42 seconds. Wow!!



This is Marie, she is traveling with Philip and also from France. Marie is an engineer and is helping me with packing everlastings! Much appreciated ❤️

If you have had a notable experience with our everlastings, please kindly leave a Google review [here](#). Much appreciated ❤️

🌸 Get ready to plant Everlastings!...and competition time!!! 🌸



[Buy any packet online throughout the Month of March, and go in the draw to win THREE x 50g packets - worth \\$135! Yay!](#)

Keep in touch | We'd love to hear about your experience of growing Lucinda's everlastings. .
Send some pictures! Follow us on the social links below, send us your questions, progress updates and photos to jen@everlastings.com.au

Happy planting!

